

How to accelerate deployment and unlock scalability of MaaS? Introduction to IMOVE project

Marco Boero, Softeco Sismat Srl

Public Transportation and MaaS – Business & Governance Models

MaaS Alliance & IMOVE Stakeholders Forum Workshop

14/03/2018, Hamburg, Germany

#imovemaas





IMOVE – Unlocking Large-Scale Access to Combined Mobility through a European MaaS Network Project synopsis

- Innovative concepts, systems and services towards 'mobility as a service'
 - MG-6.1-2016 call, one of the three selected projects (IMOVE, MaaS4EU, MyCorridor)
- Research and Innovation Action (RIA)
 - 30 months duration: 1.06.2017 – 30.11.2019
 - 3.69 M€ cost, 3.39 M€ EU grant
- Consortium: 14 organisations, 8 countries
 - research: CVUT, ICCS, RISE Viktoria
 - consulting / ICT: FIT, MOSAIC, SOFTECO, Vectos
 - mobility: 5T, TfGM, Torino, UBIGO, URBI, Vasttrafik
 - stakeholders' association: UITP





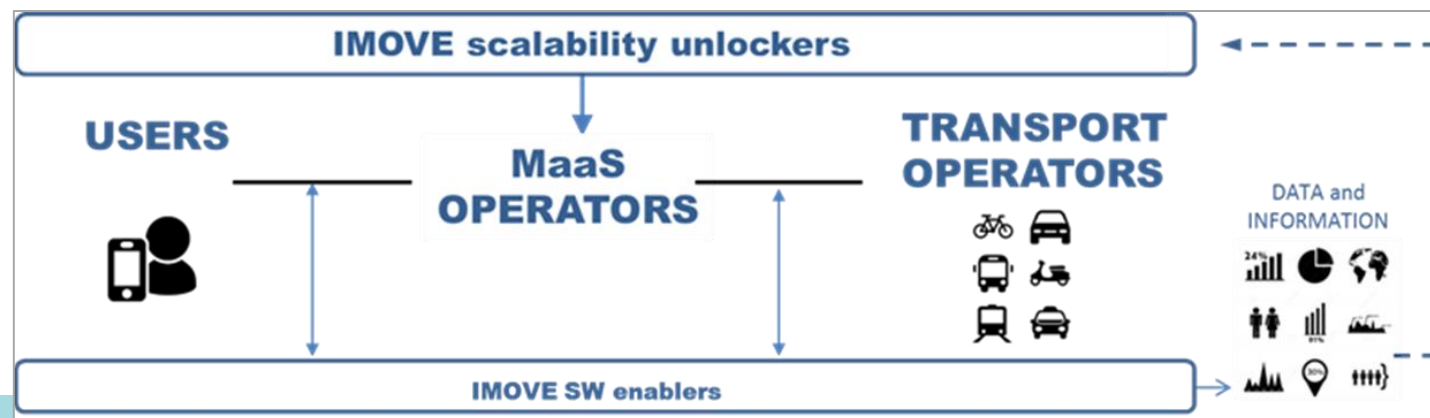
IMOVE – Unlocking Large-Scale Access to Combined Mobility through a European MaaS Network

Overall goal and approach

To **accelerate the deployment** and **unlock the scalability** of MaaS schemes in Europe, paving the way for a “**roaming**” service for **MaaS** users at the European level.

Two main streams of investigation

1. **IMOVE Scalability Unlockers:** sets of measures, organisational frameworks, operational and business models enhancing the framework conditions for MaaS development and operation
2. **IMOVE Software Enablers:** tools enhancing current MaaS supporting technologies, improving interoperability and integration of MaaS schemes in the landscape of ITS and other mobility services



Validation
- In 4 EU Living Lab
- cross-site interoperability (roaming)



IMOVE – Unlocking Large-Scale Access to Combined Mobility through a European MaaS Network Measures and Scalability Unlockers

Sustainable business models and organisational MaaS frameworks

- contracts, T&Cs, ...

Behaviour change strategies

- e.g. incentive models, rewarding schemes, gamification, etc.

User engagement schemes

- inspired by marketing and XaaS economy

Long-term MaaS interoperability and roaming strategies

- cross-MaaS, cross-borders





IMOVE - Unlocking Large-Scale Access to Combined Mobility through

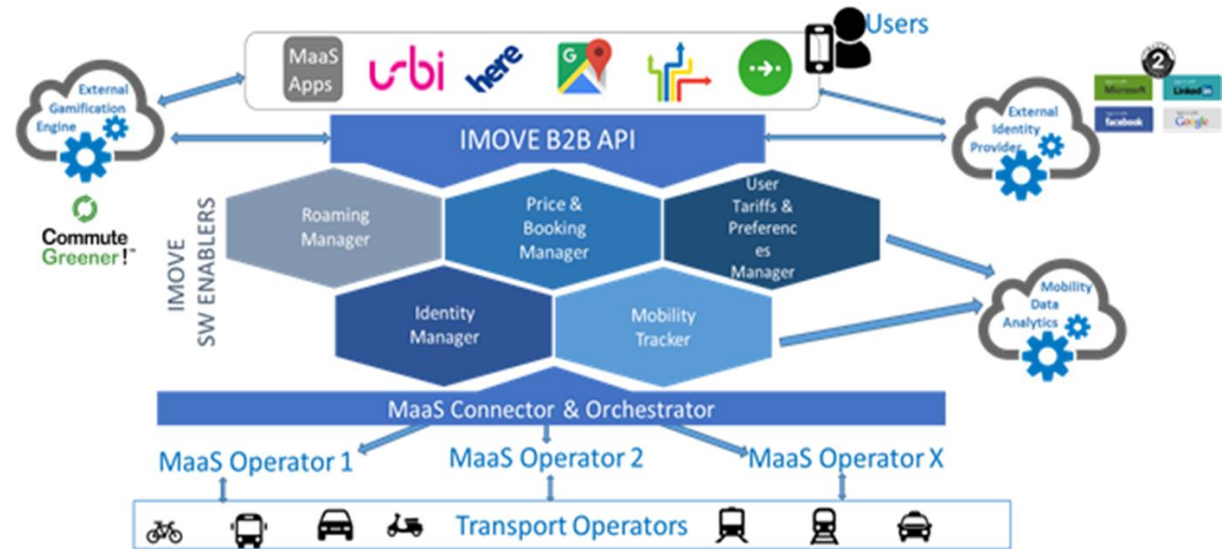
a European MaaS Network

Supporting technologies: the IMOVE Software Enablers

A set of **software components enhancing** current MaaS supporting technologies, improving **interoperability** and **integration** of MaaS applications and other mobility schemes

- **Identity Manager** (single service sign-on)
- **User Tariffs/Price Manager**
- **User Preferences Manager**
- **Mobility Organiser** (combine solutions)
- **Booking Manager**
- **Mobility Tracker** (mobility patterns, analytics)
- **Notification Manager**
- **Incentives & Engagement Manager**
- **Roaming Manager** (cross-MaaS interoperability)

➔ A reference **Data Model** to ensure **interoperability**





IMOVE - Unlocking Large-Scale Access to Combined Mobility through

a European MaaS Network

Supporting technologies: the IMOVE Software Enablers

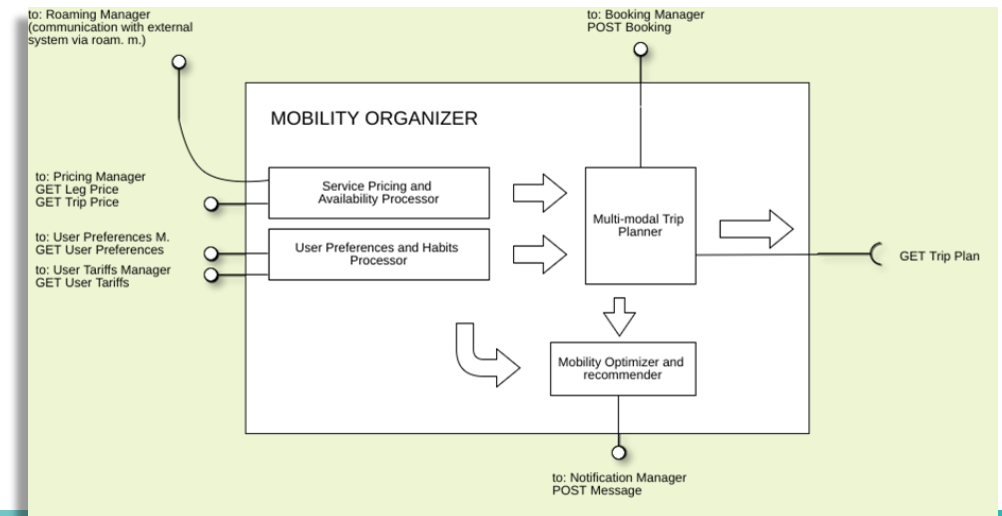
- **Building blocks**, each providing a self-contained MaaS operation related (core) service
- Documented B2B **data/service APIs**
- Can be «**chained**» together to support various MaaS operational tasks

Pros

- Gradual introduction of technology
- Integration with preferred operator'/users' tools
- Support scalability and evolution of MaaS operations

Challenges

- Functional completeness/integrity wrt existing technology
- Interoperability
 - use of data/service standards





IMOVE – Unlocking Large-Scale Access to Combined Mobility through

a European MaaS Network the IMOVE pilot Living Labs



Berlin Brandenburg: metropolitan/regional area (3.4 million inhabitants). Ambition: integration of public transport (VBB), taxis (negotiation in progress), car sharing (DRIVENOW, CAR2GO, DRIVEBY –free-floating, UBEEGO –stationary), scooter sharing (COUP, EMMY –free-floating) and bike sharing (OBIKE, LIDL-BIKE –free-floating, NEXTBIKE –stationary); **URBI MaaS** App.



Gothenburg: urban and regional area (Västra Götaland). Ambition: enabling entrepreneurs and companies to start MaaS services (including public transport) in their service offering; enabling and stimulating the establishment of various MaaS services through 3rd-party reselling of digital tickets; tendering for **a new MaaS scheme**.



Greater Manchester metropolitan area (2.7 million inhabitants). Ambition: building a supportive community of operators and enhancing the core offer through the integration of car sharing, electric vehicle charging, taxi, local link (including demand-responsive transport service), heavy rail and dockless cycle sharing schemes in the airport district; Travelspirit community for MaaS development.



Turin: urban area (0.9 million inhabitants). Ambition: integration of public transport (GTT, SADEM), taxis (WETAXI), bike sharing (TOBIKE –stationary, OBIKE, GOBEE BIKE –free-floating) and car sharing (ENJOY, CAR2GO –free-floating, BLUETORINO –stationary, electric); implementation of pay-as-you-go model with multiple subscription options; cooperation with **URBI MaaS** provider.

- **common methodology**
- a number of **local stakeholders** engaged (cooperation agreements)
- **additional Living Lab** (open call) & **cross-site LL** (interoperability / roaming)





IMOVE – Unlocking Large-Scale Access to Combined Mobility through a European MaaS Network

The IMOVE MaaS Stakeholders' Forum

- An **open discussion platform** on MaaS
 - Led by **UITP**
 - Leveraging/complementing existing initiatives
 - UITP Combined Mobility Platform, Umii Forum, Y4PT Foundation, etc.
- Multiple **target groups**
 - City administrations and local authorities
 - Private and public transport operators
 - Citizens
 - ITS / ICT providers
- **Contacts**
 - Guido Di Pasquale, UITP
 - guido.dipasquale@uitp.org



14 / 03 / 2018

I simply want to move. I want to move simply





IMOVE – Unlocking Large-Scale Access to Combined Mobility through a European MaaS Network

The IMOVE Open Call for demonstration site

○ Why

- Looking for **one additional site** interested in **piloting** and **validating** IMOVE solutions (enablers)

○ Who

- EU cities and regions
- engaged in MaaS development (ongoing, short-term plans)

○ How

- Joining IMOVE as a **new beneficiary**
- fixed budget for **cooperation**

○ When

- launch: March 2018
- closure: May 2018
- selection: June 2018
- entry/start: August/September 2018



Thank you and stay
tuned!

Marco Boero

Project Coordinator

SOFTECO SISMAT SRL

Via De Marini, 1 - WTC Tower,
16149 Genoa, Italy

marco.boero@softeco.it

#imovemaas

www.imove-project.eu

@H2020_MOVE

#H2020_IMOVE



UNLOCKING LARGE-SCALE ACCESS
TO COMBINED MOBILITY THROUGH
A EUROPEAN MAAS NETWORK

